



# Northpark Village Square

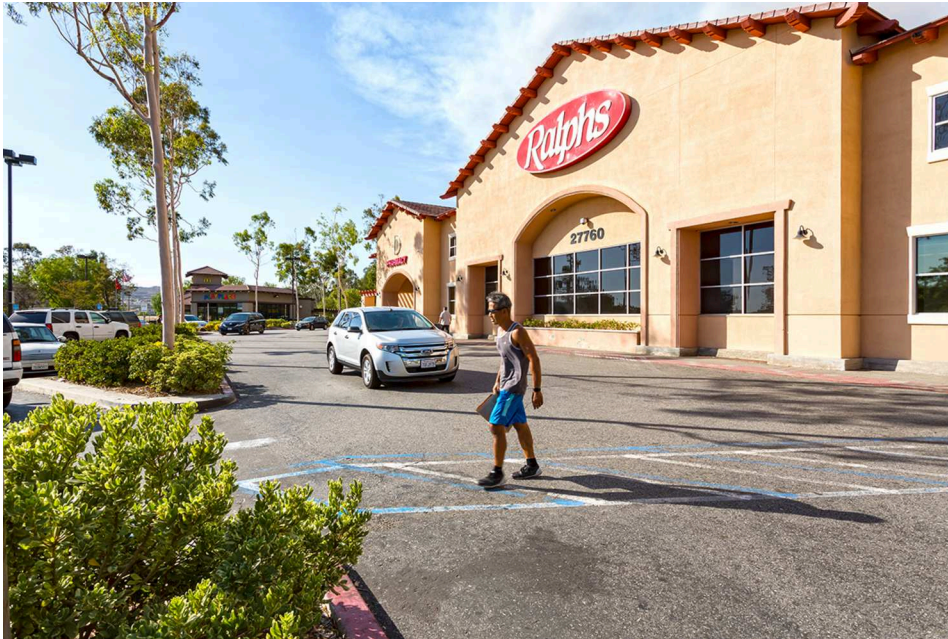
27756 McBean Parkway, Valencia, CA 91354

Coordinates:

Latitude: N34°26'45"

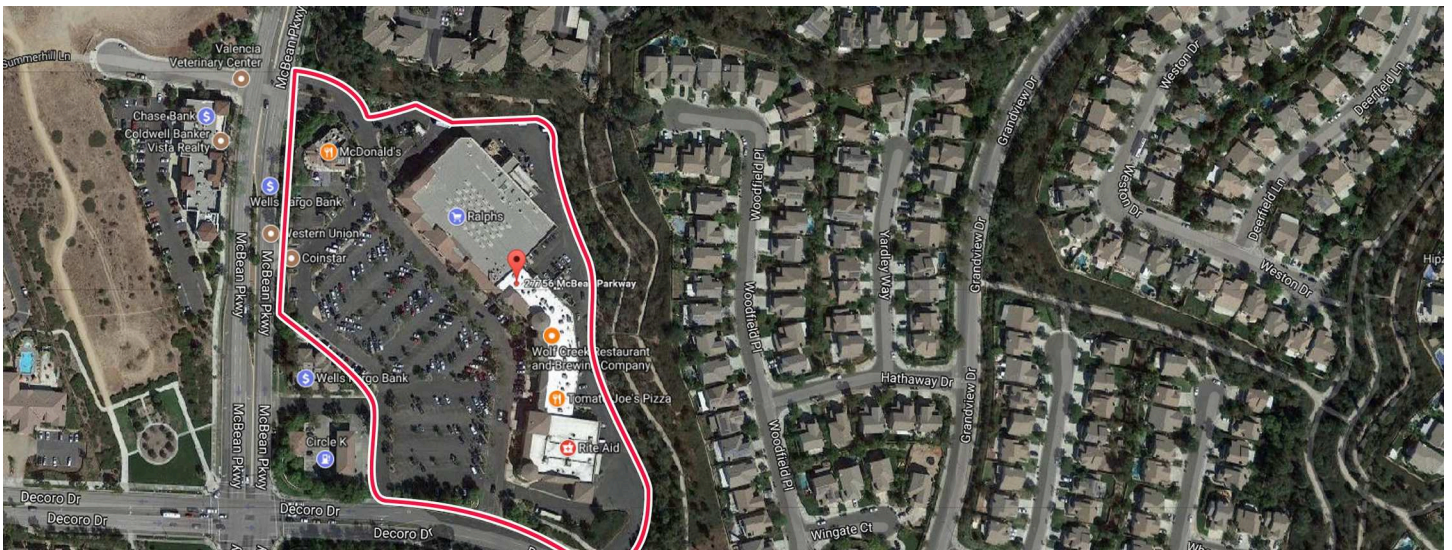
Longitude: W118°33'12"

Leasing Contact: Sean Steuart | sean.steuart@inlandgroup.com | 630.586.6551



## Property Highlights

- Center Size: 87,103 SF
- Located on NEC of McBean Parkway (27,400 AADT) and West Decoro Road (17,200 AADT) in a densely populated area of Valencia
- Anchored by Ralph's with Rite Aid and Circle K/Mobile
- Strong population and average HH Incomes makes this an excellent choice



[inlandgroup.com](http://inlandgroup.com)

The Inland name and logo are registered trademarks being used under license.





# Northpark Village Square

27756 McBean Parkway, Valencia, CA 91354

Leasing Contact: Sean Stuart | sean.stuart@inlandgroup.com | 630.586.6551

Store Listing Center Size: 87,103 Sq. Ft.		
Unit #	Sq. Ft.	Tenant
1	46,657 SF	Ralphs
2	1,200 SF	Carriage Trade Agency
3	1,860 SF	Salon 7
4	1,001 SF	S&S Donuts
5	1,939 SF	La Iguana
6	1,200 SF	Starbucks
7	4,418 SF	Wolf Creek Restaurant & Brewing Company
8	1,200 SF	Mathnasium of North Santa Clarita
9	2,049 SF	Club Pilates
10	1,196 SF	US Nails & Spa
11	1,200 SF	Garlic Jim's Famous Gourmet Pizza
12	1,215 SF	Patricia A. Guerrero DDS
13	16,708 SF	Rite Aid
14		Circle K/Mobil
15	5,260 SF	Wells Fargo Bank
16		McDonald's



## 2018 Demographics Estimate

	Population	Households	Average HH Income
1 Mile	20,826	7,306	138,967
3 Mile	92,170	30,344	134,277
5 Mile	187,913	61,400	131,617

Visit us at: <http://inlandgroup.com>

