



Northpark Village Square

27756 McBean Parkway, Valencia, CA 91354

Coordinates:

Latitude: N34°26'45"

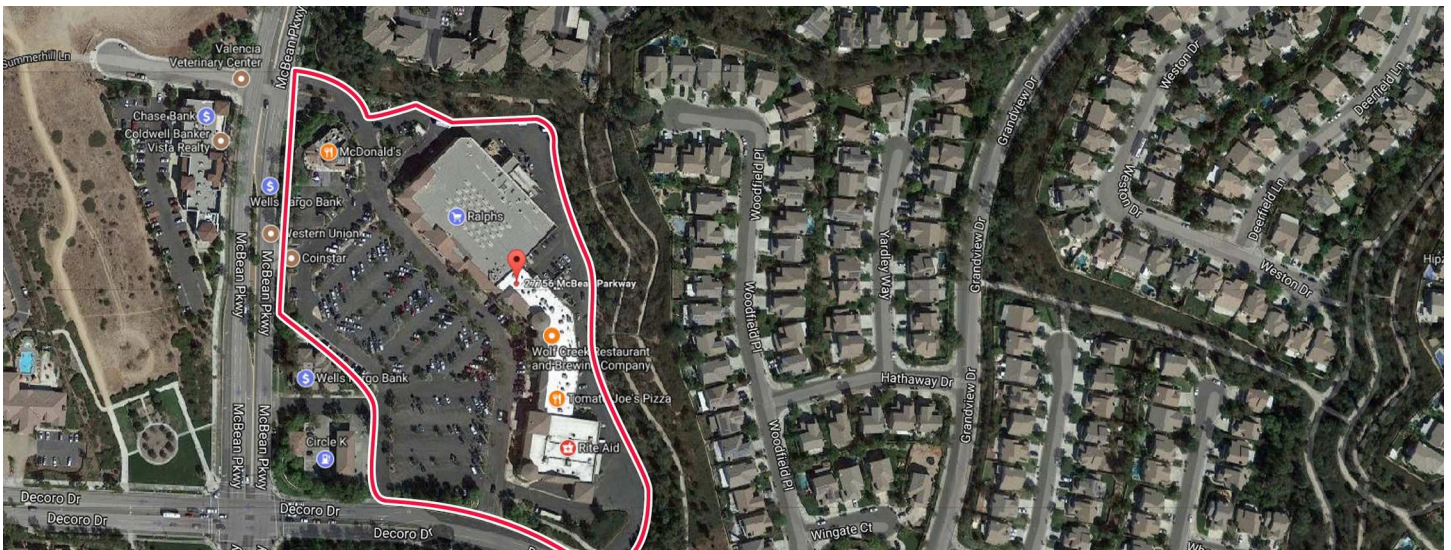
Longitude: W118°33'12"

Leasing Contact: Sean Steuart | sean.steuart@inlandgroup.com | 630.586.6551



Property Highlights

- Center Size: 87,103 SF
- Located on NEC of McBean Parkway (27,400 AADT) and West Decoro Road (17,200 AADT) in a densely populated area of Valencia
- Anchored by Ralph's with Rite Aid and Circle K/Mobile
- Strong population and average HH Incomes makes this an excellent choice



inlandgroup.com

The Inland name and logo are registered trademarks being used under license.



Northpark Village Square

27756 McBean Parkway, Valencia, CA 91354

Leasing Contact: Sean Stuart | sean.stuart@inlandgroup.com | 630.586.6551

Store Listing Center Size: 87,103 Sq. Ft.		
Unit #	Sq. Ft.	Tenant
1	46,657 SF	Ralphs
2	1,200 SF	Carriage Trade Agency
3	1,860 SF	Salon 7
4	1,001 SF	S&S Donuts
5	1,939 SF	La Iguana
6	1,200 SF	Starbucks
7	4,418 SF	Wolf Creek Restaurant & Brewing Company
8	1,200 SF	Mathnasium of North Santa Clarita
9	2,049 SF	Club Pilates
10	1,196 SF	US Nails & Spa
11	1,200 SF	Garlic Jim's Famous Gourmet Pizza
12	1,215 SF	Patricia A. Guerrero DDS
13	16,708 SF	Rite Aid
14		Circle K/Mobil
15	5,260 SF	Wells Fargo Bank
16		McDonald's



2017 Demographics Estimate

	Population	Households	Average HH Income
1 Mile	20,120	6,662	141,590
3 Mile	91,260	28,363	132,657
5 Mile	187,856	55,489	127,088

Visit us at: <http://inlandgroup.com>

