



# Shoppes at Lake Park

2971 South 5600 West, West Valley UT 84120

Coordinates:

Latitude: 40.6965

Longitude: -112.0273

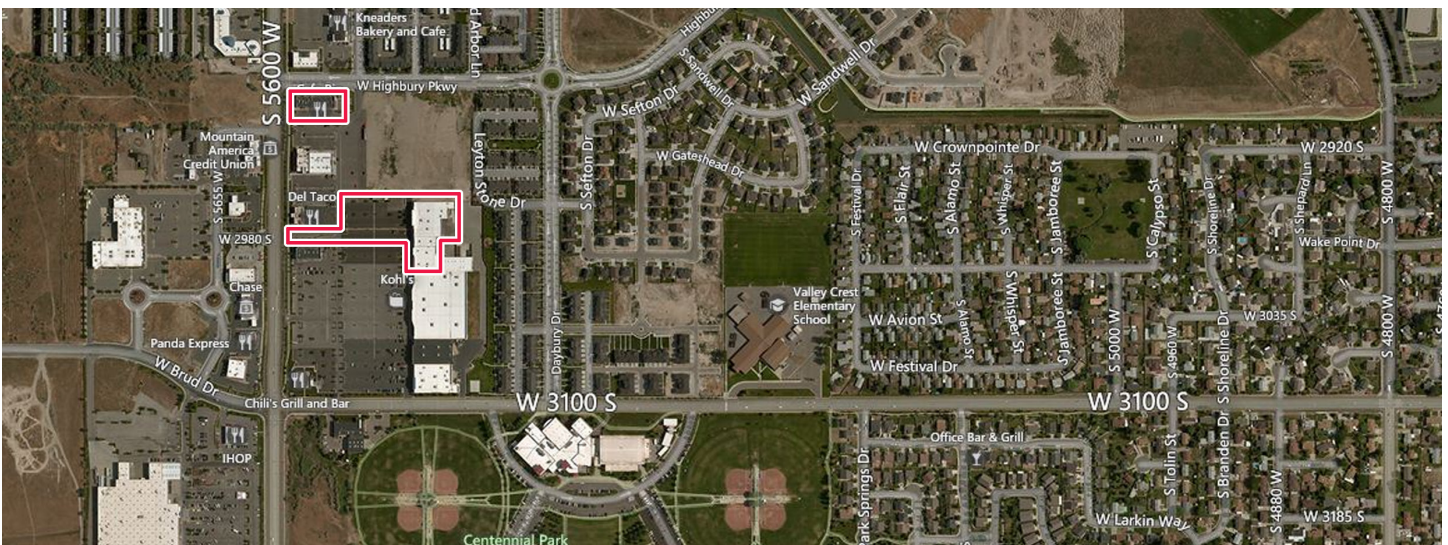
Leasing Contact: Sean Stuart | [sean.stuart@inlandgroup.com](mailto:sean.stuart@inlandgroup.com) | 630.586.6551 | [inlandgroup.com](http://inlandgroup.com)

Property managed by Inland Commercial Real Estate Services LLC



## > Property Highlights

- Center Size: 52,997 SF
- Shadow-anchored by Kohl's and located in an adjacent suburb of Salt Lake City
- Great visibility on South 5600 West - 40,000 AADT
- Strong population in immediate area - 112,000+ within a 3 mile radius



[inlandgroup.com](http://inlandgroup.com)

The Inland name and logo are registered trademarks being used under license.



# Shoppes at Lake Park

2971 South 5600 West, West Valley UT 84120

Coordinates:

Latitude: 40.6965

Longitude: -112.0273

Leasing Contact: Sean Steuart | sean.steuart@inlandgroup.com | 630.586.6551 | inlandgroup.com

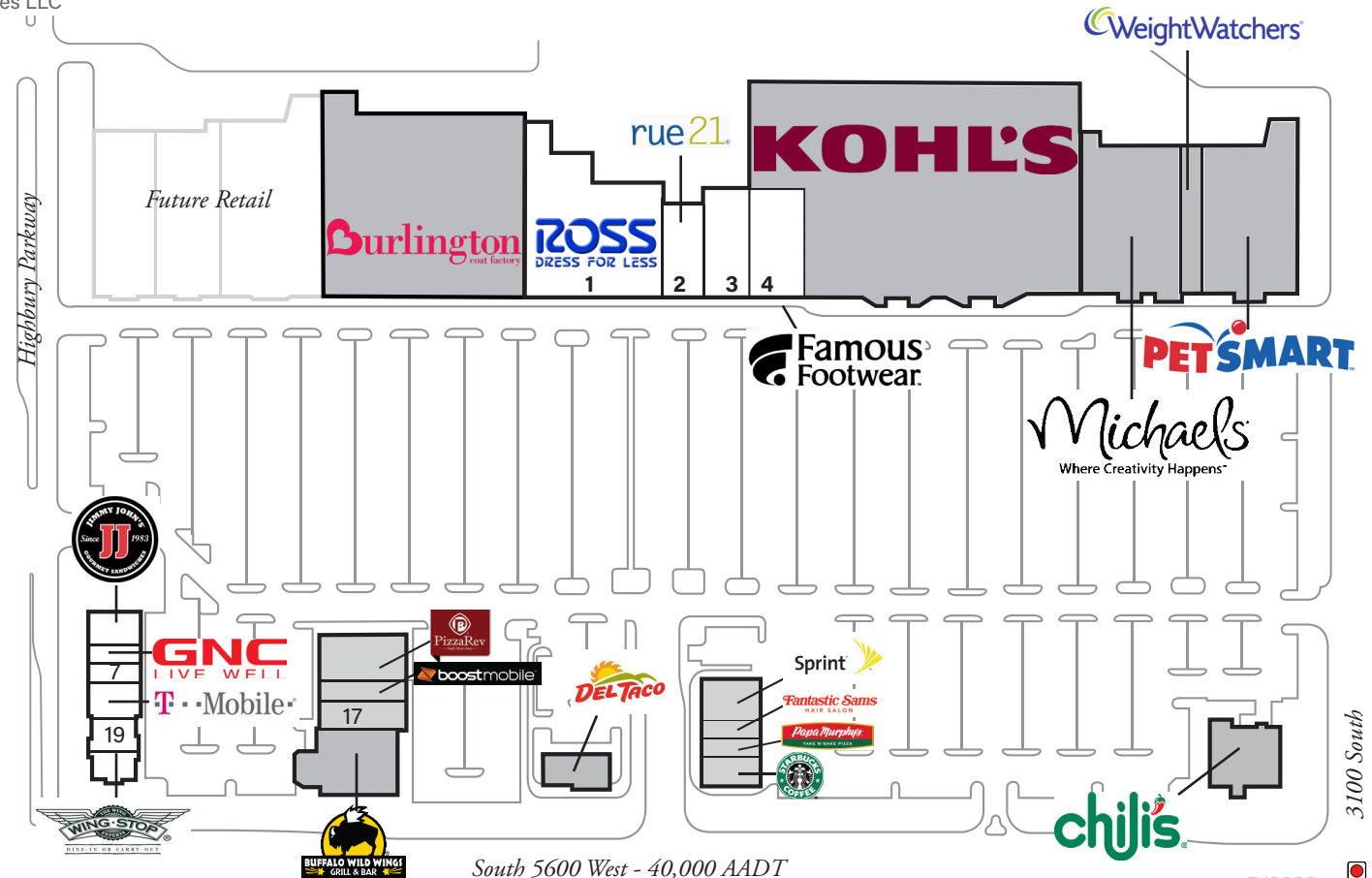
Property managed by Inland Commercial Real Estate Services LLC

## Store Listing

Center Size: 52,997 Sq. Ft.

Unit #	Sq. Ft.	Tenant
1	25,000 SF	Ross Dress for Less
2	5,000 SF	rue21
3	5,000 SF	Affordable Dentures & Crowns
4	8,000 SF	Famous Footwear
5	1,252 SF	Jimmy John's
6	1,276 SF	GNC
7	1,276 SF	Tokyo Japan
8	2,591 SF	T-Mobile
9	1,550 SF	Wingstop
10		<i>Kohl's</i>
11		<i>Michaels</i>
12		<i>Weight Watchers</i>
13		<i>PetSmart</i>
14		<i>Chili's Grill &amp; Bar</i>
15		<i>Del Taco</i>
16		<i>Buffalo Wild Wings</i>
17		<i>BD Holdings</i>
18		<i>Burlington</i>
19	2,052 SF	LoLo Hawaiian BBQ

Items in blue and Italicized are owned by others.



South 5600 West - 40,000 AADT

5/2023

**2023**  
Demographics Estimate



	Resident Population	Households	Average HH Income
1 Mile	13,528	3,710	\$115,257
3 Miles	104,586	29,041	\$112,766
5 Miles	229,547	67,320	\$105,970



@inlandgroup