



North Hills Square Shopping Center

4650 N. University Drive, Coral Springs, FL 33067

Coordinates:

Latitude: 26.2882

Longitude: -80.2525

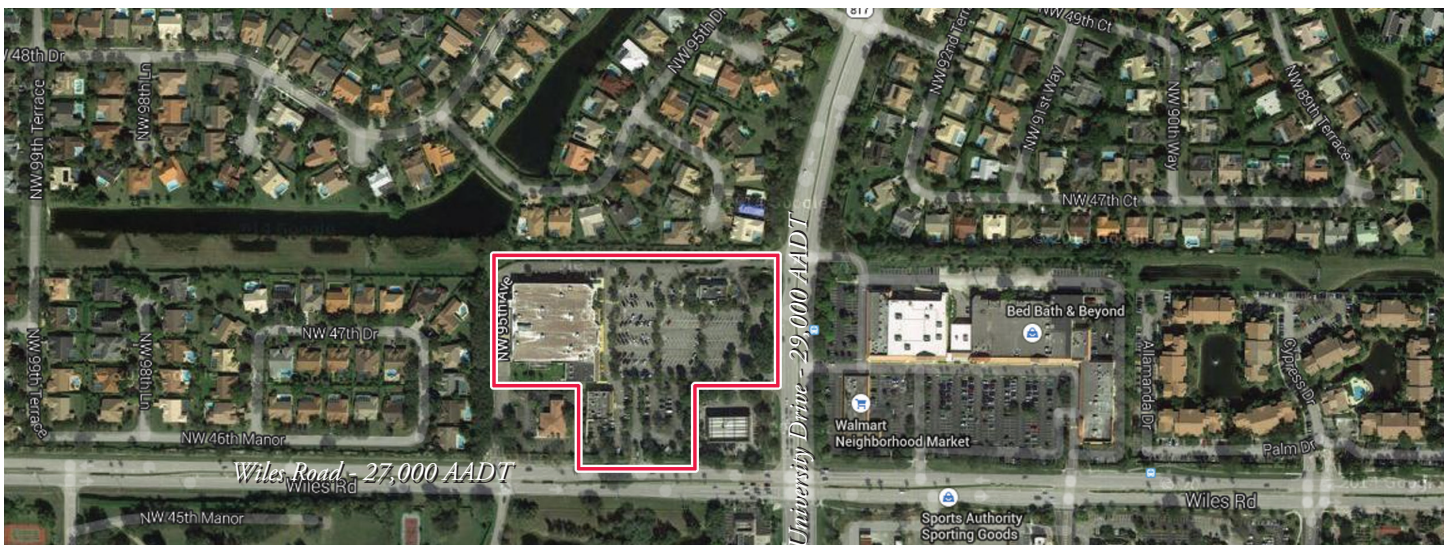
Leasing Contact: Stephanie Karpinski | skarpinski@inlandgroup.com | 630.586.4745 | inlandgroup.com

Property managed by Inland Commercial Real Estate Services LLC



Property Highlights

- Center Size: 63,829 SF
- Busy center in densely populated area on NWC of Wiles Road (27,000 AADT) & University Drive (29,000 AADT)
- Anchored by Walmart Neighborhood Market w/great mix of small shop tenants
- Strong population and high incomes makes this an excellent choice



inlandgroup.com

The Inland name and logo are registered trademarks being used under license.



North Hills Square Shopping Center

4650 N. University Drive, Coral Springs, FL 33067

Coordinates:

Latitude: 26.2882

Longitude: -80.2525

Leasing Contact: Stephanie Karpinski | skarpinski@inlandgroup.com | 630.586.4745 | inlandgroup.com

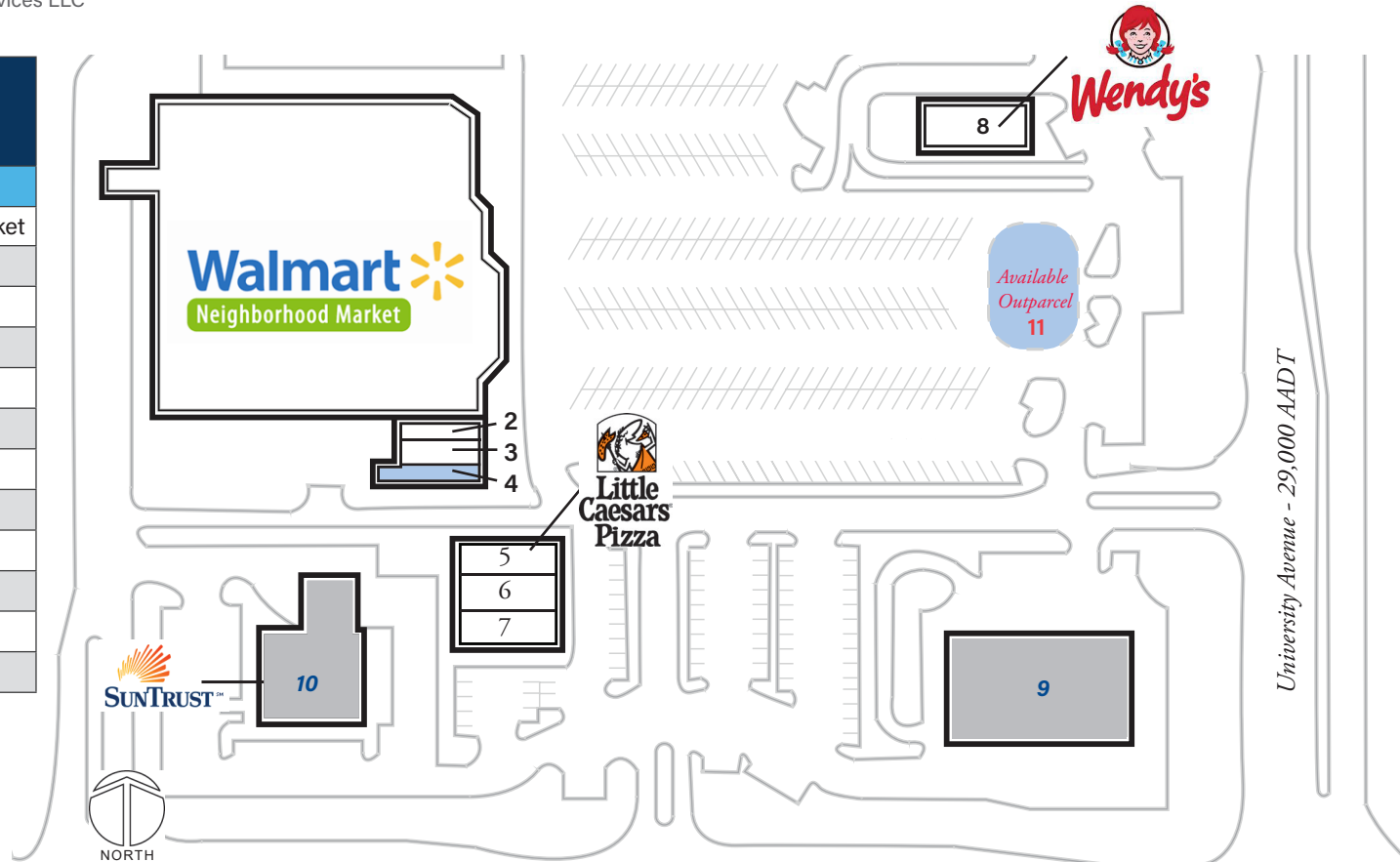
Property managed by Inland Commercial Real Estate Services LLC

Store Listing

Center Size: 63,829 Sq. Ft.

Unit #	Sq. Ft.	Tenant
1	52,024 SF	Walmart Neighborhood Market
2	1,200 SF	Real Estate II
3	1,200 SF	Elite Dry Cleaners
4	1,600 SF	Available
5	1,800 SF	Little Caesar's
6	805 SF	Mona's II
7	2,200 SF	Manhattan Bagel
8	3,000 SF	Wendy's
9		<i>University Wiles</i>
10		<i>Suntrust Bank</i>
11		Available Outparcel

Items in blue and italicized are owned by others.



Wiles Road - 27,000 AADT

5/2023

2023
Demographics Estimate

	Resident Population	Households	Average HH Income
1 Mile	16,151	5,626	\$123,875
3 Miles	131,134	45,186	\$133,425
5 Miles	311,261	112,260	\$125,028



@inlandgroup