



Blossom Valley Plaza

2900 Geer Road, Turlock, CA 95382

Coordinates:

Latitude: 37.5186

Longitude: -120.8486

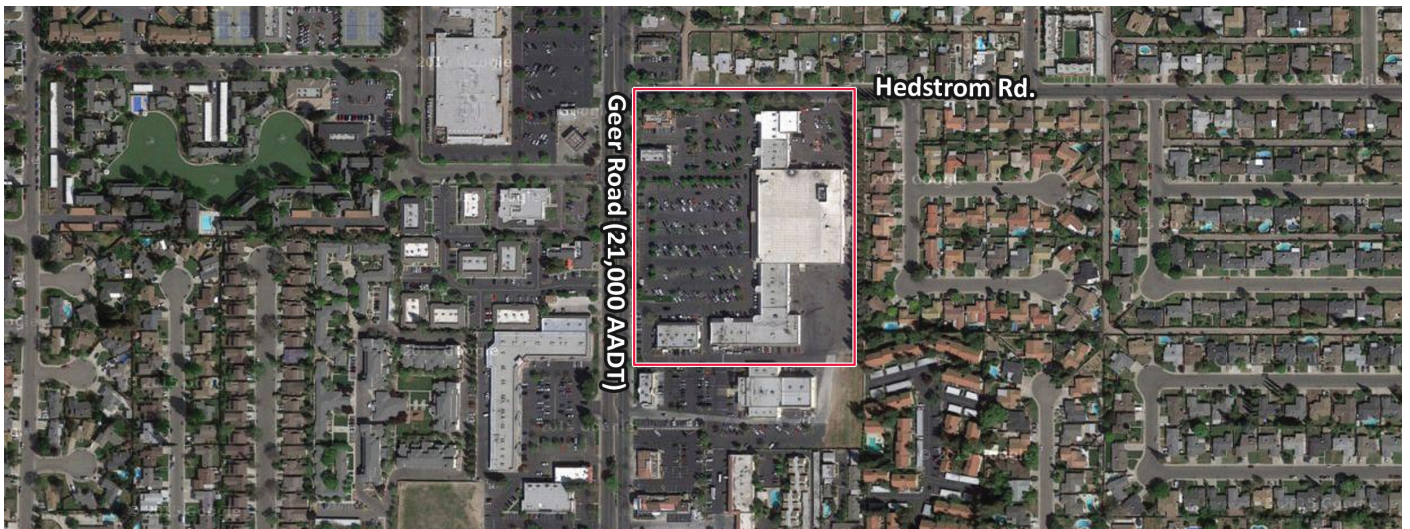
Leasing Contact: Sean Steuart | sean.steuart@inlandgroup.com | 630.586.6551 | inlandgroup.com

Property managed by Inland Commercial Real Estate Services LLC



> Property Highlights

- Center Size 111,475 SF
- Located on Geer Road (21,000 AADT), near the intersection of Monte Vista Avenue in central Turlock, California
- Anchored by Raley's and included great mix of national and regional retailers
- Strong population in a dominant retail corridor makes this a great location



inlandgroup.com

The Inland name and logo are registered trademarks being used under license.



Blossom Valley Plaza

2900 Geer Road, Turlock, CA 95382

Coordinates:

Latitude: 37.5186

Longitude: -120.8486

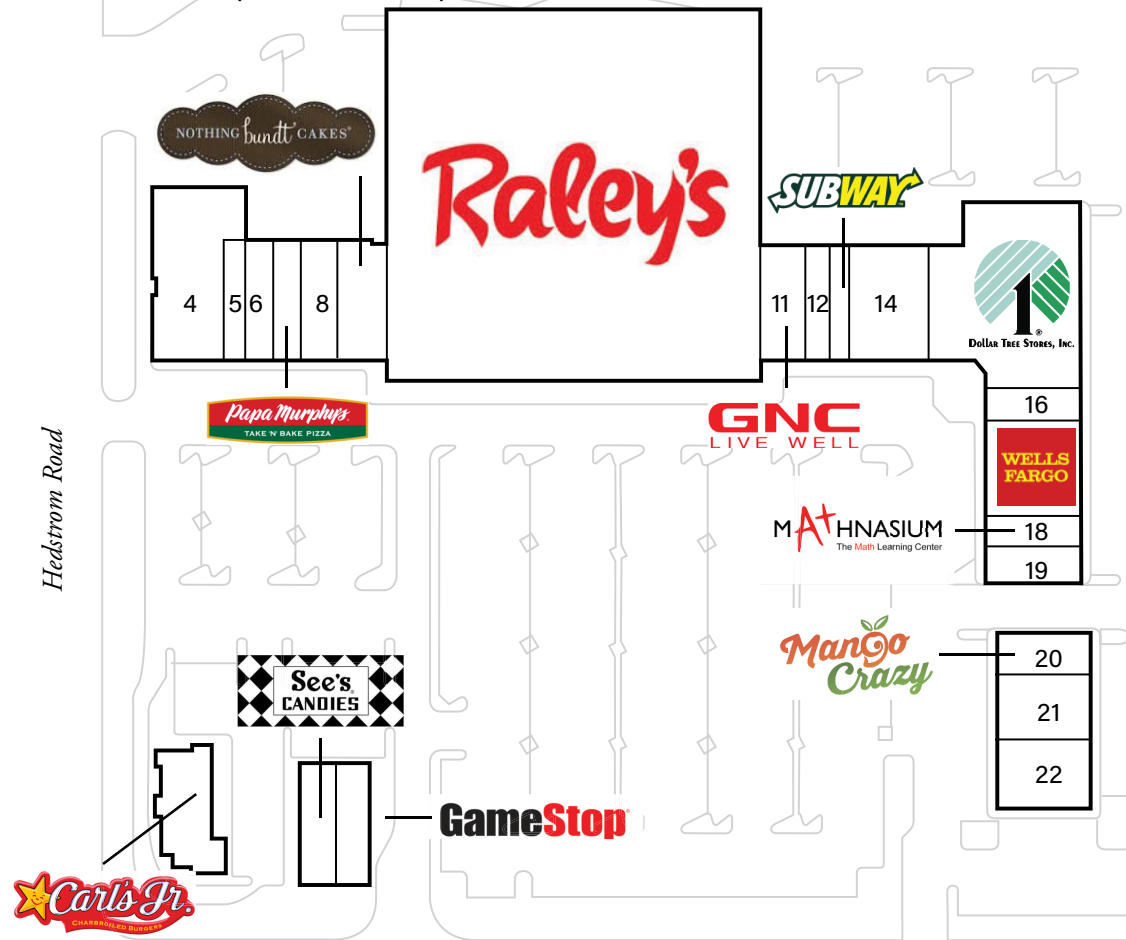
Leasing Contact: Sean Steuart | sean.steuart@inlandgroup.com | 630.586.6551 | inlandgroup.com

Property managed by Inland Commercial Real Estate Services LLC

Store Listing

Center Size: 111,475 Sq. Ft.

Unit #	Sq. Ft.	Tenant
1	1,446 SF	GameStop
2	1,577 SF	See's Candies
3	2,536 SF	Carl's Jr.
4	5,000 SF	Jay's Tires
5	1,020 SF	Postal Center USA
6	1,400 SF	Smoke 4 Less
7	1,330 SF	Papa Murphy's
8	1,750 SF	Carr's Cleaners
9	2,437 SF	Nothing Bundt Cakes
10	60,114 SF	Raley's
11	2,100 SF	GNC
12	1,050 SF	MyMy Nails
13	1,050 SF	Subway
14	4,200 SF	US Army Office
15	10,665 SF	Dollar Tree
16	1,200 SF	JC Morales
17	3,600 SF	Wells Fargo Bank
18	1,200 SF	Mathnasium
19	1,200 SF	Accurate Family Dental
20	1,620 SF	Mango Crazy
21	2,580 SF	Neesan Market
22	2,400 SF	AJ's Cafe and Grill



Geer Road - 21,000 AADT

2023

Demographics Estimate

	Resident Population	Households	Average HH Income
1 Mile	22,172	8,101	\$85,941
3 Miles	79,147	26,647	\$111,907
5 Miles	92,143	30,475	\$111,305



@inlandgroup