



Geneva Commons

600 N. Edwards Boulevard, Lake Geneva WI 53147

Coordinates:

Latitude: 42.5974

Longitude: -88.4138

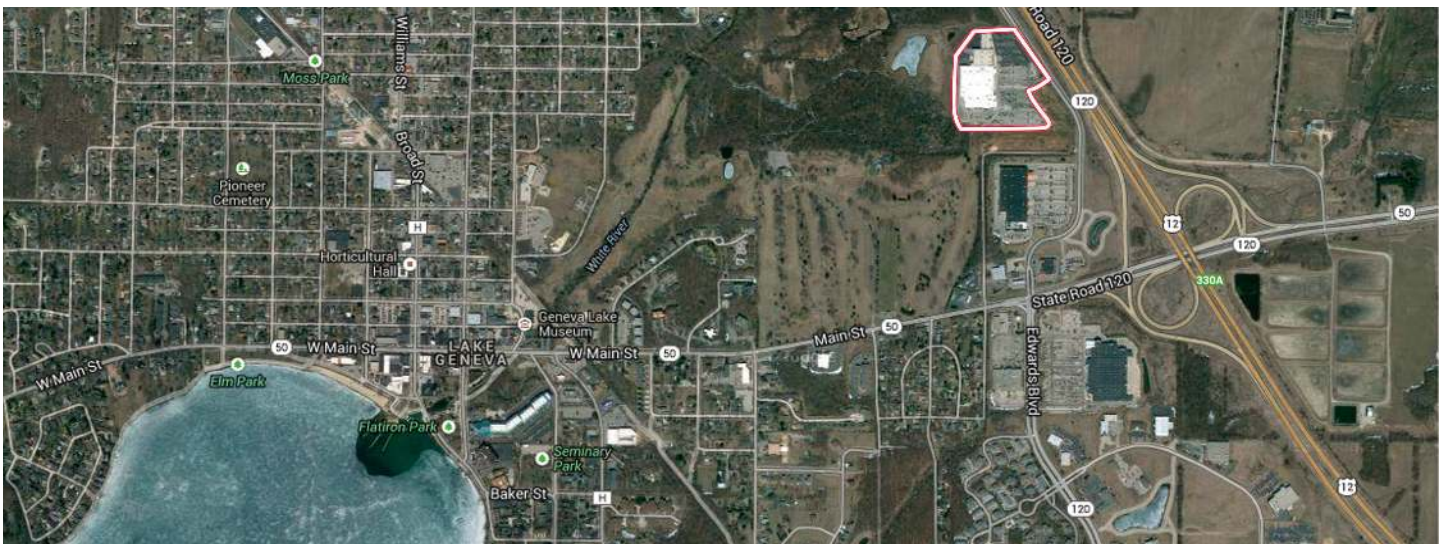
Leasing Contact: Sean Steuart | sean.steuart@inlandgroup.com | 630.586.6551 | inlandgroup.com

Property managed by Inland Commercial Real Estate Services LLC



> Property Highlights

- Center Size 55,077 SF
- Newer center with great visibility from Route 12 - 23,400 AADT on the east side of Lake Geneva
- Anchored by TJ Maxx and JoAnn, center benefits from high traffic from adjacent Target
- Great location & the only TJ Maxx & Target in the area with Great Clips & T-Mobile as complimentary retailers



inlandgroup.com

The Inland name and logo are registered trademarks being used under license.



Geneva Commons

600 N. Edwards Boulevard, Lake Geneva WI 53147

Coordinates:

Latitude: 42.5974

Longitude: -88.4138

Leasing Contact: Sean Steuart | sean.steuart@inlandgroup.com | 630.586.6551 | inlandgroup.com

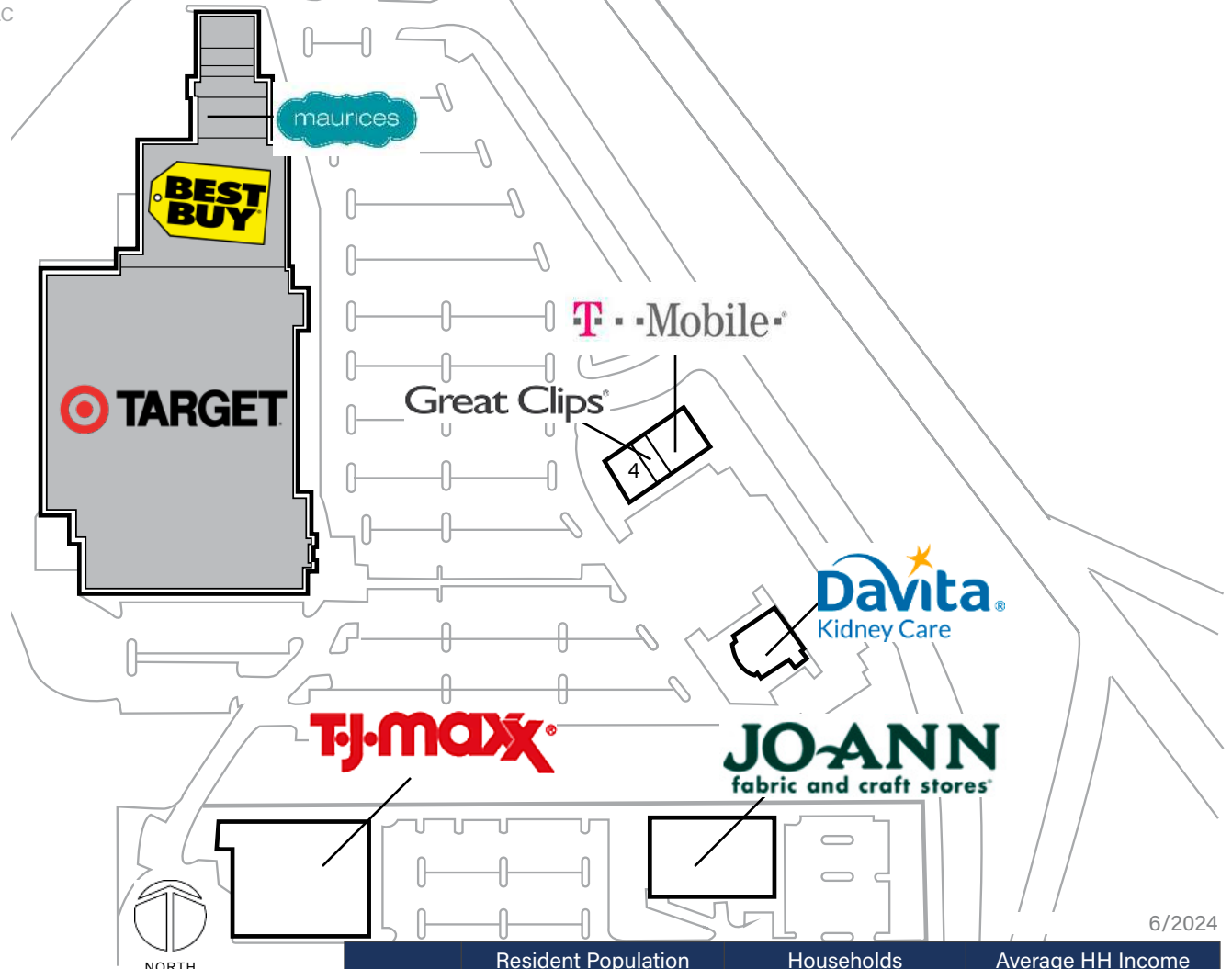
Property managed by Inland Commercial Real Estate Services LLC

Store Listing

Center Size: 55,077 Sq. Ft.

Unit #	Sq. Ft.	Tenant
1	24,000 SF	TJ Maxx
2	15,000 SF	JoAnn
3	8,007 SF	DaVita/Total Renal Care
4	4,500 SF	D'Aprile Properties
5	2,380 SF	T-Mobile
6	1,190 SF	Great Clips
7		<i>Target</i>
8		<i>Best Buy</i>
9		<i>Maurices</i>

Items in blue and italicized are owned by others



2024
Demographics Estimate

	Resident Population	Households	Average HH Income
1 Mile	2,584	1,303	\$73,888
3 Miles	10,916	4,907	\$108,486
5 Miles	21,054	9,160	\$105,932



@inlandgroup