



# Wedgewood Commons

5036 Goodman Road, Olive Branch, MS 38654

Coordinates:

Latitude: 34.9651

Longitude: -89.8989

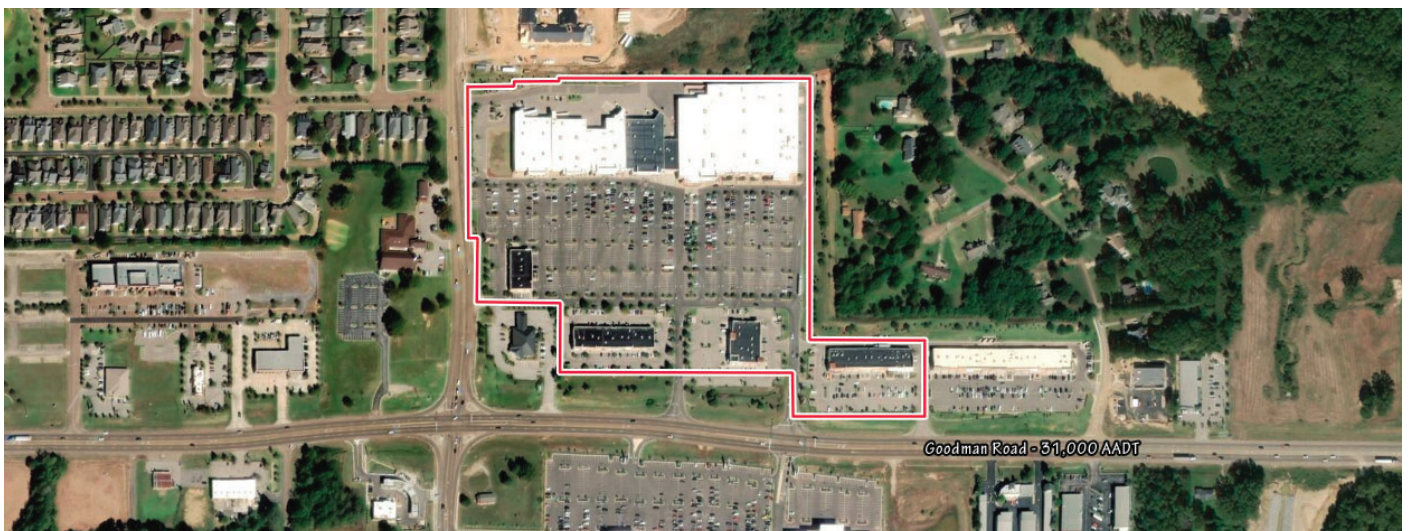
Leasing Contact: Stephanie Karpinski | [s.karpinski@inlandgroup.com](mailto:s.karpinski@inlandgroup.com) | 630.586.4745 | [inlandgroup.com](http://inlandgroup.com)

Property managed by Inland Commercial Real Estate Services LLC



## > Property Highlights

- Center Size: 169,558 SF
- Located on well trafficked Goodman Road with 31,000 AADT
- Just minutes from downtown Memphis and within the Memphis MSA
- Great tenant mix and strong demographics makes this an excellent choice



[inlandgroup.com](http://inlandgroup.com)

The Inland name and logo are registered trademarks being used under license.



# Wedgewood Commons

5036 Goodman Road, Olive Branch, MS 38654

Coordinates:  
Latitude: 34.9651  
Longitude: -89.8989

Leasing Contact: Stephanie Karpinski | s.karpinski@inlandgroup.com | 630.586.4745 | inlandgroup.com

Property managed by Inland Commercial Real Estate Services LLC

## Store Listing

Center Size: 169,558 Sq. Ft.

Unit #	Sq. Ft.	Tenant
1		Target
2	5,500 SF	Rack Room Shoes
3	24,000 SF	TJ MAXX
4	22,000 SF	Ross Dress for Less
5	21,360 SF	Michael's
6	24,000 SF	HomeGoods
9	1,696 SF	Lendmark Financial
10	1,572 SF	Nathan R. Hamman, DDS
11	3,070 SF	Available
12	1,611 SF	Simply Uniform
13	1,888 SF	Elite Physical Therapy
14	3,373 SF	Hollywood Feed
15	1,841 SF	Master Jewelers
16	1,335 SF	Available
17	5,522 SF	Gould's Day Spa
18	1,921 SF	TCBY
19	1,335 SF	SportClips
20	3,562 SF	AT&T Mobility
21	4,178 SF	Available
22	5,082 SF	Available
23	1,338 SF	Poke World
24	3,590 SF	Memphis Urgent Care #2
25	3,619 SF	Southern Bancorp Bank
26	1,606 SF	European Wax Center
27	2,216 SF	The Wine Cellar
28	3,019 SF	Leslie's Pool Supplies
29	3,233 SF	Heartland Dental
30	2,753 SF	Urban Fusion & Sushi
31	3,038 SF	VisionWorks
32	10,300 SF	Ulta Beauty



## 2024 Demographics Estimate

	Resident Population	Households	Average HH Income
1 Mile	3,727	1,395	\$128,355
3 Miles	22,985	8,491	\$127,565
5 Miles	82,124	30,307	\$114,705



@inlandgroup

Items in blue and italicized are owned by others.

Visit us at: [shopwedgewoodcommons.com](http://shopwedgewoodcommons.com)

10/2024