



# Shoppes at Lake Park

2971 South 5600 West, West Valley UT 84120

Coordinates:

Latitude: 40.6965

Longitude: -112.0273

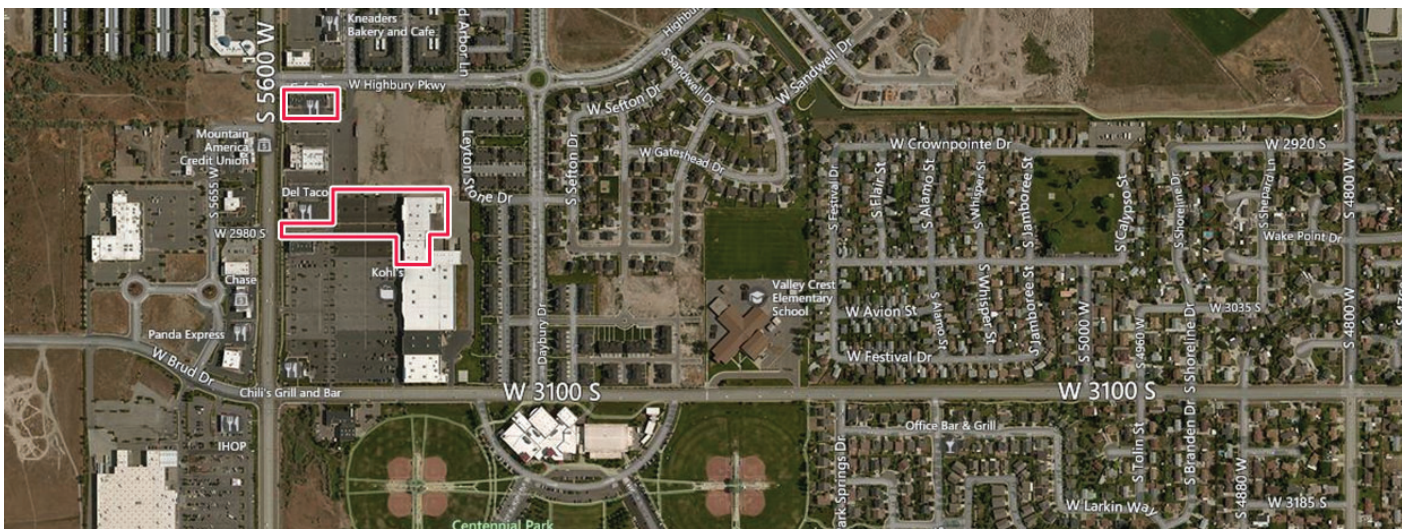
Leasing Contact: Sean Stuart | [sean.stuart@inlandgroup.com](mailto:sean.stuart@inlandgroup.com) | 630.586.6551 | [inlandgroup.com](http://inlandgroup.com)

Property managed by Inland Commercial Real Estate Services LLC



## > Property Highlights

- Center Size: 52,997 SF
- Shadow-anchored by Kohl's and located in an adjacent suburb of Salt Lake City
- Great visibility on South 5600 West - 40,000 AADT
- Strong population in immediate area - 112,000+ within a 3 mile radius



[inlandgroup.com](http://inlandgroup.com)

The Inland name and logo are registered trademarks being used under license.



# Shoppes at Lake Park

2971 South 5600 West, West Valley UT 84120

Coordinates:

Latitude: 40.6965

Longitude: -112.0273

Leasing Contact: Sean Steuart | [sean.steuart@inlandgroup.com](mailto:sean.steuart@inlandgroup.com) | 630.586.6551 | [inlandgroup.com](http://inlandgroup.com)

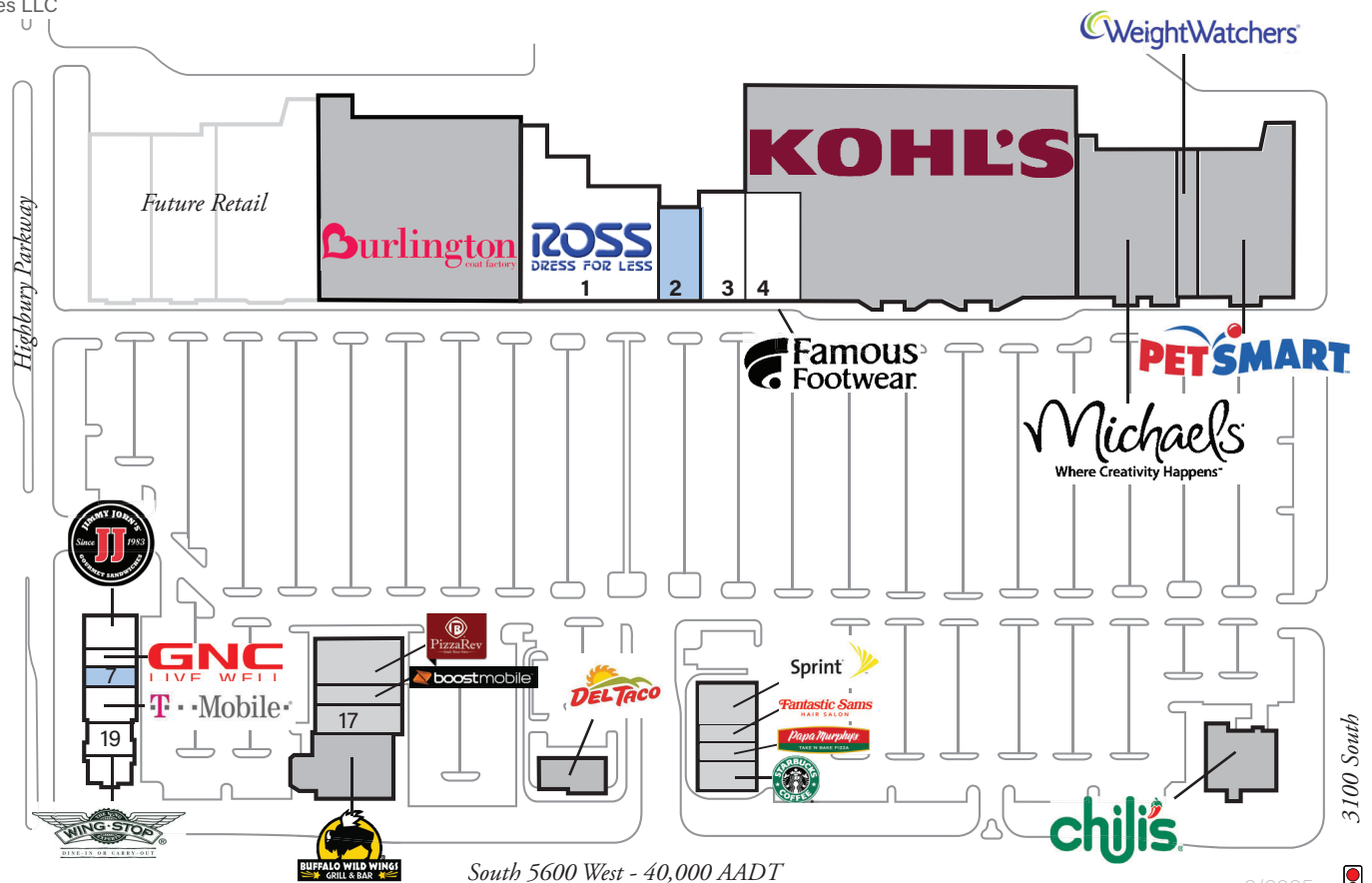
Property managed by Inland Commercial Real Estate Services LLC

## Store Listing

Center Size: 52,997 Sq. Ft.

Unit #	Sq. Ft.	Tenant
1	25,000 SF	Ross Dress for Less
2	5,000 SF	Available
3	5,000 SF	Affordable Dentures & Crowns
4	8,000 SF	Famous Footwear
5	1,252 SF	Jimmy John's
6	1,276 SF	GNC
7	1,276 SF	Available
8	2,591 SF	T-Mobile
9	1,550 SF	Wingstop
10		Kohl's
11		Michaels
12		Weight Watchers
13		PetSmart
14		Chili's Grill & Bar
15		Del Taco
16		Buffalo Wild Wings
17		BD Holdings
18		Burlington
19	2,052 SF	LoLo Hawaiian BBQ

Items in blue and italicized are owned by others.



South 5600 West - 40,000 AADT

## 2024

Demographics Estimate



	Resident Population	Households	Average HH Income
1 Mile	12,462	3,542	\$107,106
3 Miles	96,328	27,607	\$112,832
5 Miles	218,075	65,525	\$104,284



@inlandgroup