



Northville Park Place

18771 Traditions Drive, Northville, MI 48167

Coordinates:

Latitude: 42.4228

Longitude: -83.4338

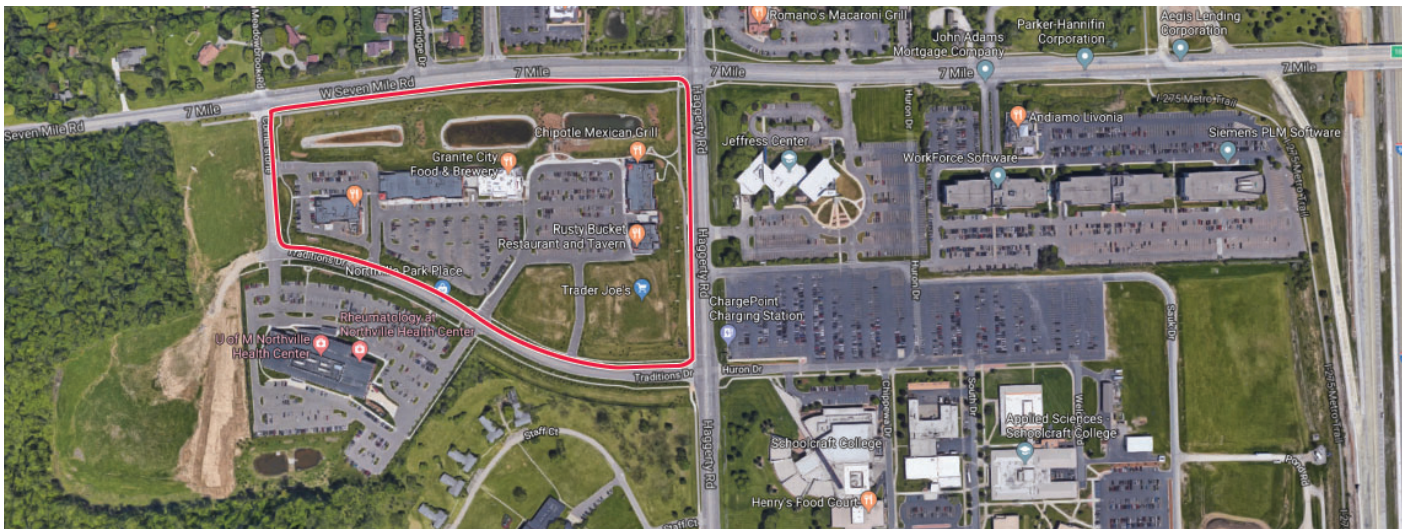
Leasing Contact: Angela Surico | angela.surico@inlandgroup.com | 630.586.6648 | inlandgroup.com

Property managed by Inland Commercial Real Estate Services, LLC



> Property Highlights

- Center Size 78,421 SF
- Located at SWC of 7 Mile Road (16,000 AADT) and Haggerty Road (26,000 AADT)
- Join tenants Trader Joe's, Granite City Brewery, Orangetheory Fitness and more
- Solid demographics and a great location makes this a great choice



inlandgroup.com

The Inland name and logo are registered trademarks being used under license.



Northville Park Place

18771 Traditions Drive, Northville, MI 48167

Coordinates:

Latitude: 42.4228

Longitude: -83.4338

Leasing Contact: Angela Surico | angela.surico@inlandgroup.com | 630.586.6648 | inlandgroup.com

Property managed by Inland Commercial Real Estate Services, LLC

Store Listing

Center Size: 78,421 Sq. Ft.

Unit #	Sq. Ft.	Tenant
1	12,500 SF	Trader Joe's
2	4,500 SF	Available
3	2,317 SF	BurgerFi
4	2,685 SF	MOD Pizza
5	2,073 SF	SVS Vision
6	2,039 SF	AT&T Mobility
7	1,274 SF	Woof Gang Bakery & Grooming
8	2,709 SF	Kimchi Box
9	2,400 SF	Chipotle Mexican Grill
10	10,491 SF	Granite City Food & Brewery
11	3,004 SF	Hands & Stone Massage & Facial Spa
12	1,769 SF	Bliss Nails & Spa
13	3,135 SF	Orangetheory Fitness
14	6,291 SF	Gazelle Sports
15	2,595 SF	Restore Company Hyper Wellness Cryotherapy
16	2,694 SF	One Society
17	1,995 SF	Playa Bowls
18	2,210 SF	Edelman Financial Engines
19	1,920 SF	Jimmy John's
20	3,097 SF	DentalWorks
21	3,500 SF	Sherwin-Williams
22	3,223 SF	Red Olive Restaurant
23		<i>University of Michigan Health System</i>

Items in blue and italicized are owned by others.

Visit us at: www.northvilleparkplace.com



2024
Demographics Estimate

	Resident Population	Households	Average HH Income
1 Mile	3,592	1,693	\$147,731
3 Miles	71,338	30,890	\$164,672
5 Miles	185,491	80,736	\$157,997



@inlandgroup

10/2024