



Rockford Crossings

6630 - 6640 E. State Street, Rockford, IL 61108

Coordinates:

Latitude: 42.2703

Longitude: -88.987

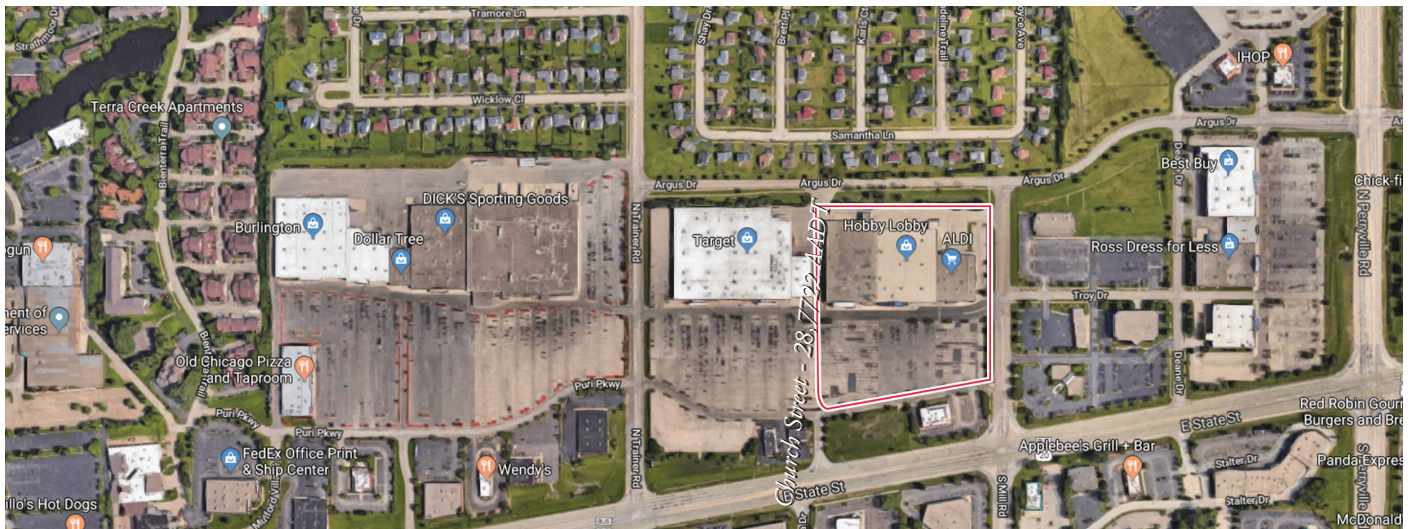
Leasing Contact: Sean Stuart | sean.stuart@inlandgroup.com | 630.586.6551 | inlandgroup.com

Property managed by Inland Property Management & Leasing Group LLC



> Property Highlights

- Center Size 118,650 SF
- Located at the NEC of East State Street - 32,800 AADT & N. Mill Road in the heart of Rockford's retail corridor
- Shadow-anchored by Target, the center has strong national retailers who draw high traffic
- Strong demographics with easy access to the property makes this a great choice



inlandgroup.com

The Inland name and logo are registered trademarks being used under license.



Rockford Crossings

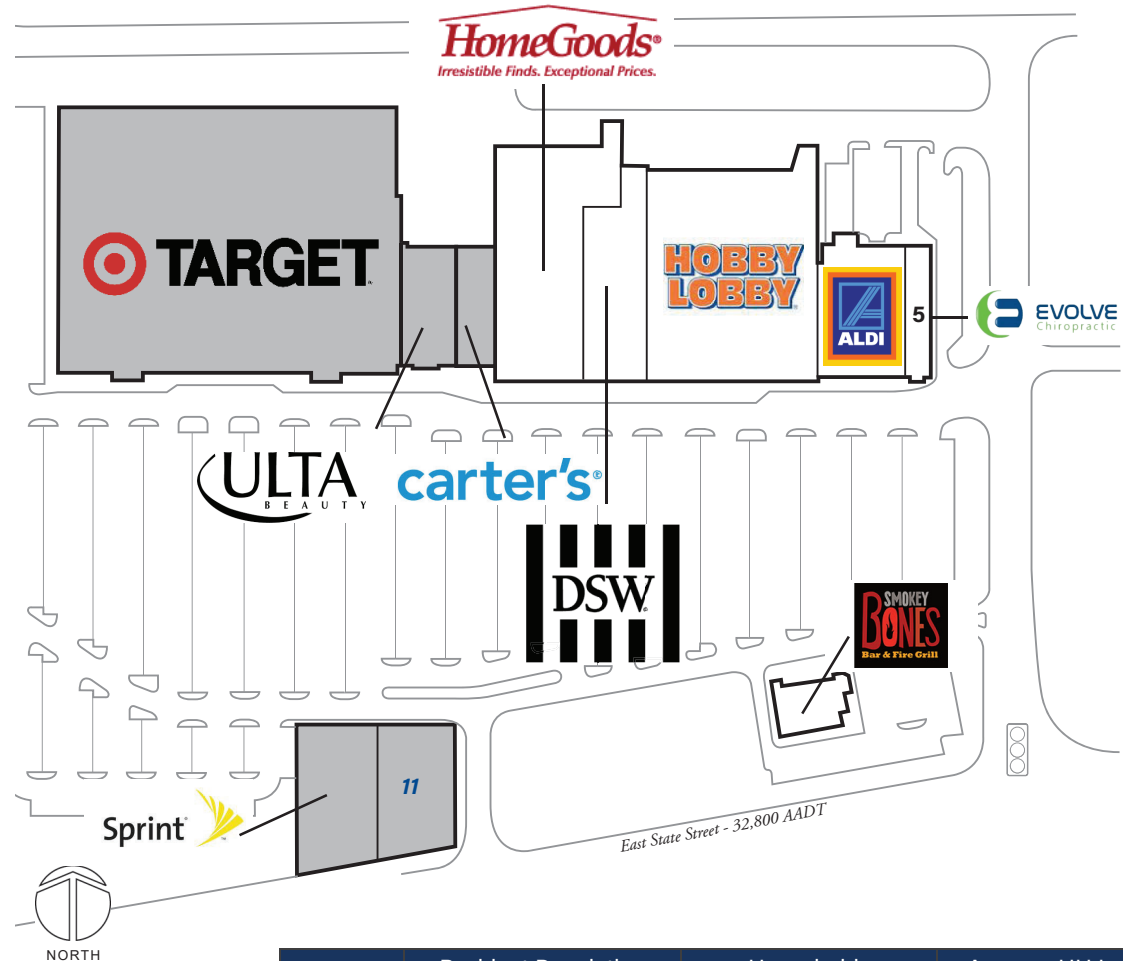
6630 - 6640 E. State Street, Rockford, IL 61108

Coordinates:
Latitude: 42.2703
Longitude: -88.987

Leasing Contact: Sean Stuart | sean.stuart@inlandgroup.com | 630.586.6551 | inlandgroup.com

Property managed by Inland Property Management & Leasing Group LLC

Store Listing		
Center Size: 118,650 Sq. Ft.		
Unit #	Sq. Ft.	Tenant
1	21,000 SF	TJ Maxx/HomeGoods
2	19,467 SF	DSW
3	55,000 SF	Hobby Lobby
4	18,352 SF	Aldi
5	4,831 SF	Evolve Chiropractic
8		<i>Target</i>
9		<i>Ulta</i>
10		<i>Sprint</i>
11		<i>Available</i>
12		<i>Smokey Bones</i>
13		<i>Carter's</i>
<i>Items in blue and italicized are owned by others</i>		



2024
Demographics Estimate

	Resident Population	Households	Average HH Income
1 Mile	6,306	2,930	\$80,934
3 Miles	48,930	20,559	\$113,307
5 Miles	129,620	55,063	\$104,161

6/2024

