



Village at Burlington Creek

6300 N. Revere Drive, Kansas City Mo 64151

Coordinates:

Latitude: 39.2087

Longitude: -94.6518

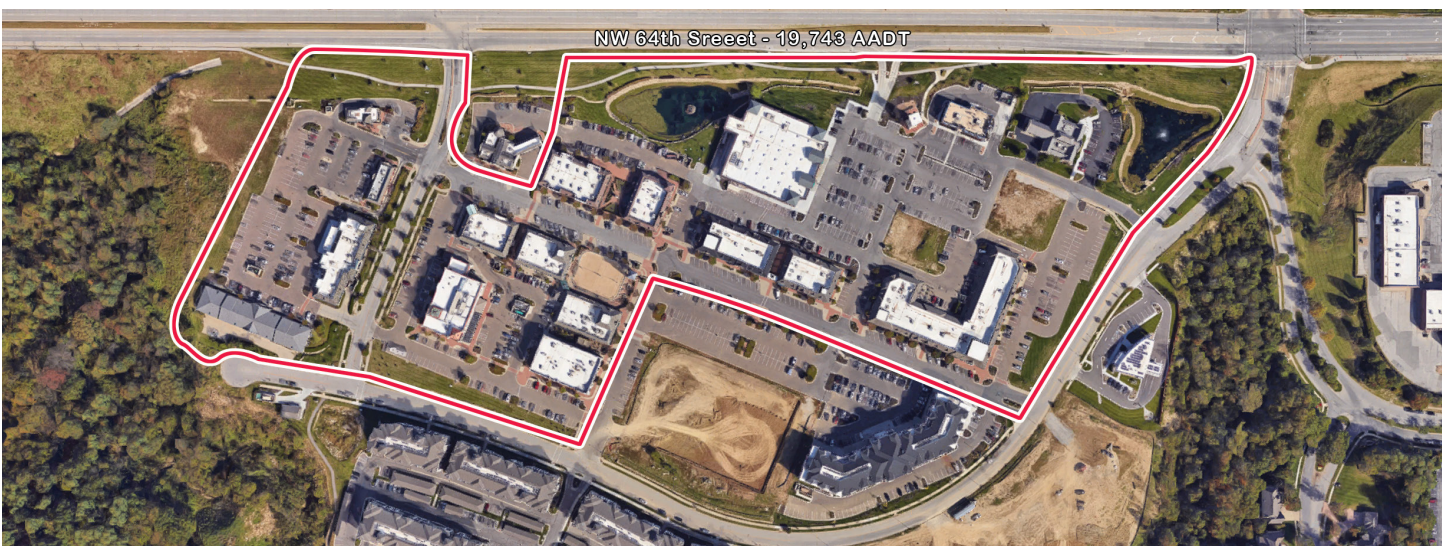
Leasing Contact: Sean Steuart | sean.steuart@inlandgroup.com | 630.586.6551 | inlandgroup.com

Property managed by Inland Commercial Real Estate Services LLC



> Property Highlights

- Center Size: 157,937 SF
- Located in the Northland area of Kansas City just west of I-29 (94,468 AADT) along NW 64th St (19,743 AADT)
- Anchored by Sprouts Farmers Market, Dominic's Casual Italian Restaurant and local and regional retailers
- Strong demographics and dense population make this a great choice



inlandgroup.com

The Inland name and logo are registered trademarks being used under license.



Village at Burlington Creek

6300 N. Revere Drive, Kansas City Mo 64151

Coordinates:
Latitude: 39.2087
Longitude:-94.6518

Leasing Contact: Sean Stuart | sean.stuart@inlandgroup.com | 630.586.6551 | inlandgroup.com

Property managed by Inland Commercial Real Estate Services LLC

Store Listing

Center Size: 157,937 Sq. Ft.

| Unit # | Sq. Ft. | Tenant |
|--------|-----------|-------------------------------------|
| 1 | 10,088 SF | Compass-Tradition Home Group |
| 3 | 1,403 SF | Stout Law |
| 4 | 3,028 SF | David R. Cummings |
| 5 | 1,998 SF | N2Robotics |
| 6 | 3,424 SF | Available |
| 7 | 600 SF | Available |
| 8 | 2,772 SF | Available |
| 10 | 2813 SF | Affordable Blinds & Shutters |
| 11 | 5,000 SF | Available |
| 12 | 2,250 SF | Leslie P McClaffin DDS |
| 13 | 2,395 SF | Taco Bell |
| 14 | 1,800 SF | Caribou Coffee |
| 15 | 1,208 SF | Fiore Wellness |
| 16 | 1,332 SF | Pura Vida Acai Café |
| 17 | 1,608 SF | SportClips |
| 18 | 2,838 SF | Dominic's Italian Express |
| 19 | 3,522 SF | Available |
| 20 | 863 SF | Smallcakes |
| 21 | 1,121 SF | Stretch Zone |
| 22 | 2,426 SF | Twisted Fresh |
| 23 | 4,641 SF | The Little Gym |
| 24 | 3,862 SF | SPIN! Pizza |
| 25 | 7,433 SF | Wildflower Montessori |
| 26 | 6,672 SF | Em Chamas |
| 27 | 1,650 SF | Light RX |
| 28 | 3,673 SF | Epic Vision |
| 29 | 3,341 SF | Available |
| 30 | 2,414 SF | Our Favorite Things |
| 31 | 1,926 SF | Northland Speech & Language Therapy |
| 32 | 3,249 SF | Club Pilates |
| 33 | 1,431 SF | Available |
| 34 | 2,805 SF | Luna Azteca Grill |
| 35 | 3,209 SF | Northland Dermatology |
| 36 | 1,514 SF | Available |
| 37 | 4,238 SF | Redwood Pediatrics |



Store Listing - Continued

| Unit # | Sq. Ft. | Tenant |
|--------|-----------|---------------------------------|
| 38 | 1,222 SF | Smoothie King |
| 39 | 2,099 SF | Athletico Physical Therapy |
| 40 | 2,675 SF | Chiro One |
| 41 | 2,864 SF | Orangetheory Fitness |
| 42 | 1,994 SF | Prime IV Hydration and Wellness |
| 43 | 2,326 SF | Available |
| 44 | 2,200 SF | Luxury Nail & Spa |
| 45 | 1,548 SF | Available |
| 46 | 4,364 SF | Palm Beach Tan |
| 47 | 4,689 SF | Community America Credit Union |
| 48 | 28,009 SF | Sprouts Farmers Market |
| 49 | | Equity Bank |
| 50 | 1,164 SF | Available |

Items in blue and italicized are owned by others.

Visit us at: www.burlingtoncreek.com



NORTH

2024

Demographics Estimate

3/2025

| | Resident Population | Households | Average HH Income |
|---------|---------------------|------------|-------------------|
| 1 Mile | 10,472 | 4,571 | \$131,844 |
| 3 Mile | 55,946 | 23,266 | \$121,366 |
| 5 Miles | 125,616 | 53,730 | \$109,955 |



@inlandgroup