



# Shoppes at Market Pointe

8650 71st Place, Papillion, NE 68133

## Coordinates:

Latitude: 41.1726

Longitude: -96.0228

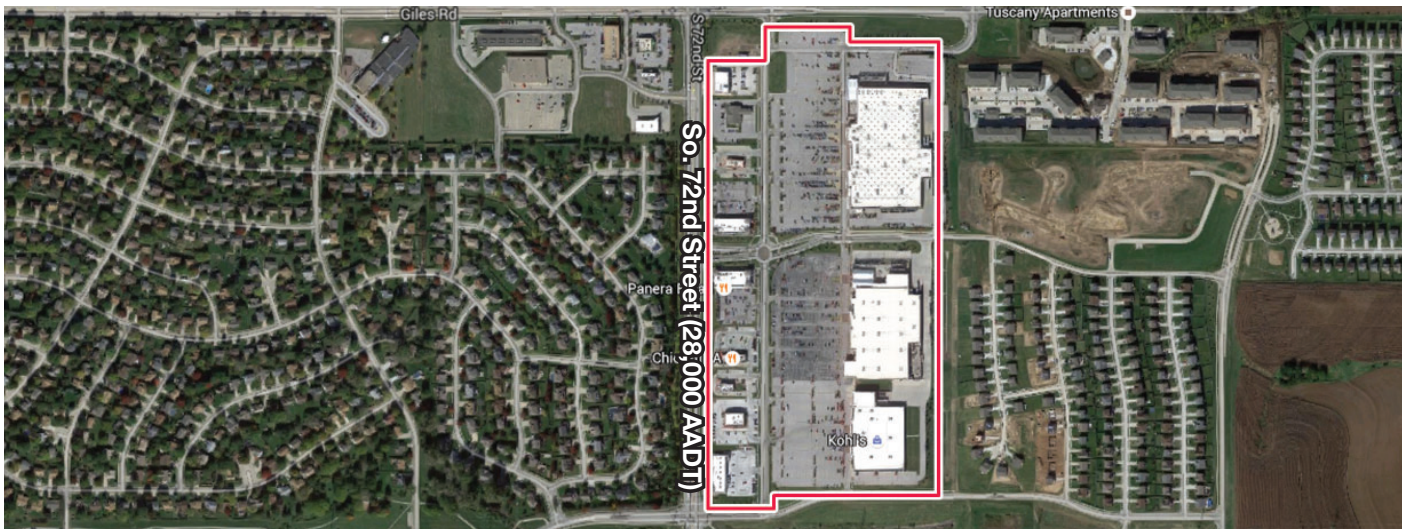
Leasing Contact: Stephanie Karpinski | [s.karpinski@inlandgroup.com](mailto:s.karpinski@inlandgroup.com) | 630.586.4745 | [inlandgroup.com](http://inlandgroup.com)

Property managed by Inland Commercial Real Estate Services LLC



## > Property Highlights

- Center Size: 253,793 SF
- Kohl's, Lowe's & Walmart anchored center located in Papillion, one of the fastest growing cities in Nebraska
- Great visibility from well-trafficked 72nd Street - 28,000 AADT
- High incomes and strong traffic counts (74,934 - 3 mile) makes this a great choice



[inlandgroup.com](http://inlandgroup.com)

The Inland name and logo are registered trademarks being used under license.



### Coordinates:

Longitude: -96.0228

Property managed by Inland Commercial Real Estate Services LLC

Center Size: 253,793 Sq. Ft.

*Items in blue & italicized are owned by others*



**X**@inlandgroup