



Marketplace at Tech Center

638 Oyster Point Road, Newport News, VA 23602

Coordinates:
Latitude: 37.103
Longitude: -76.4908

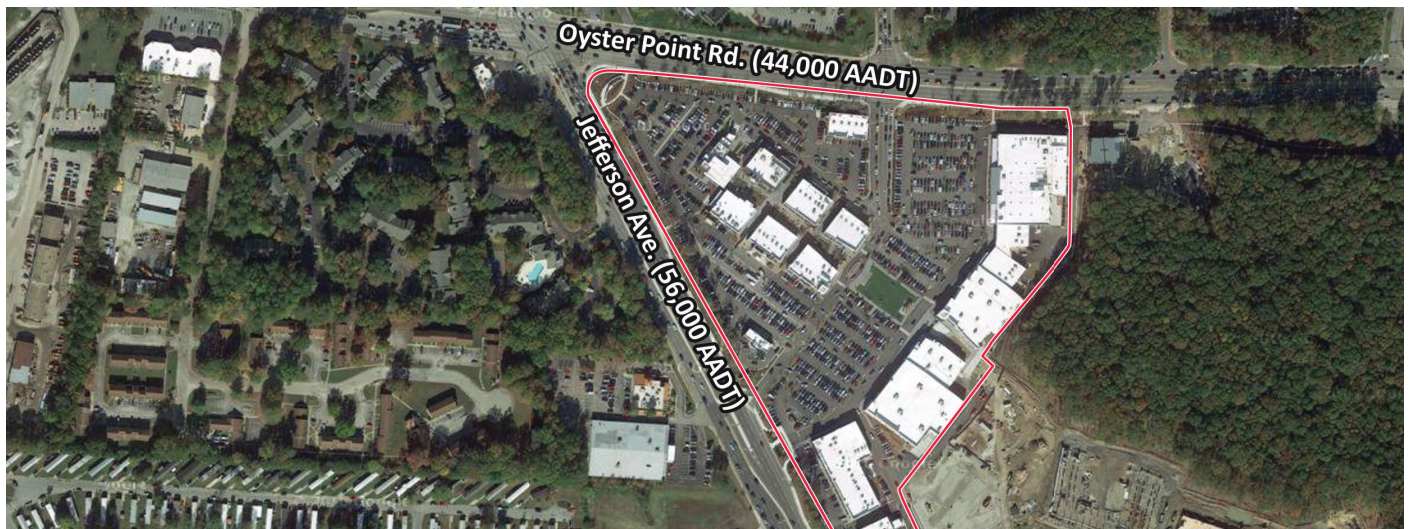
Leasing Contact: Stephanie Karpinski | skarpinski@inlandgroup.com | 630.586.4745 | inlandgroup.com

Property managed by Inland Commercial Real Estate Services LLC



Property Highlights

- Center Size: 210,648 SF
- Located on Jefferson Avenue (56,000 AADT) and Oyster Point Road (44,000 AADT) in Newport News, Virginia
- Anchored by Whole Food Market with Ulta, DSW, Homesense, Athleta, Five Below, P.F. Chang's & more
- Strong population (82K w/in 3 miles) and good incomes makes this a great choice



inlandgroup.com

The Inland name and logo are registered trademarks being used under license.



Marketplace at Tech Center

638 Oyster Point Road, Newport News, VA 23602

Coordinates:
Latitude: 37.103
Longitude: -76.4908

Leasing Contact: Stephanie Karpinski | skarpinski@inlandgroup.com | 630.586.4745 | inlandgroup.com

Property managed by Inland Commercial Real Estate Services LLC

Store Listing

Center Size: 210,666 Sq. Ft.

Unit #	Sq. Ft.	Tenant
1	40,248 SF	Whole Foods Market
2	3,640 SF	Massage Envy
3	1,332 SF	European Wax Center
4	3,040 SF	OshKosh B'gosh
5	3,915 SF	Carter's
6	18,000 SF	DSW
7	8,012 SF	Five Below
8	11,395 SF	Ulta
9	25,003 SF	HomeSense
10	3,514 SF	First Watch The Daytime Cafe
11	3,500 SF	Navy Federal Credit Union
12	1,600 SF	Jimmy John's
13	2,038 SF	Available
15	3,851 SF	Nothing Bundt Cakes
16	1,602 SF	Glossy Nails
17	1,300 SF	Available
18	1,204 SF	Hair Cuttery
19	1,142 SF	The Joint Chiropractic
20	5,000 SF	AT&T Mobility
21	2,500 SF	Point 2 Running
22	2,015 SF	Lovesac
23	1,950 SF	Starbucks
24	2,998 SF	Available
25	1,142 SF	Available
26	4,109 SF	Jos. A Bank
27	8,020 SF	Available
28	6,535 SF	Mellow Mushroom
29	7,000 SF	P.F. Chang's China Bistro
30	7,239 SF	BJ'S Restaurant & Brewhouse
31	1,446 SF	Available
32	1,448 SF	Available
33	2,150 SF	Available
34	2,600 SF	Cava Mezze Grill
35	2,560 SF	MyEyeDr.
36	1,567 SF	Willy's Cigars
37	3,000 SF	Sleep Number
38	2,000 SF	The Good Feet Store
39	4,000 SF	Mattress Firm

Store Listing - con't.

Unit #	Sq. Ft.	Tenant
40		<i>Venture Apartments</i>
41		<i>Onelife Fitness</i>
42	1,500 SF	Crumbl Cookies
43	5,529 SF	Athleta

Items in blue and italicized are owned by others.



2024 Demographics Estimate

	Resident Population	Households	Average HH Income
1 Mile	9,369	4,237	\$101,444
3 Miles	81,793	34,390	\$135,923
5 Miles	172,184	70,116	\$142,614

1/2025

Visit us at: <http://marketplaceattechcenter.com>

