



Shoppes at Lake Park

2971 South 5600 West, West Valley UT 84120

Coordinates:
Latitude: 40.6965
Longitude: -112.0273

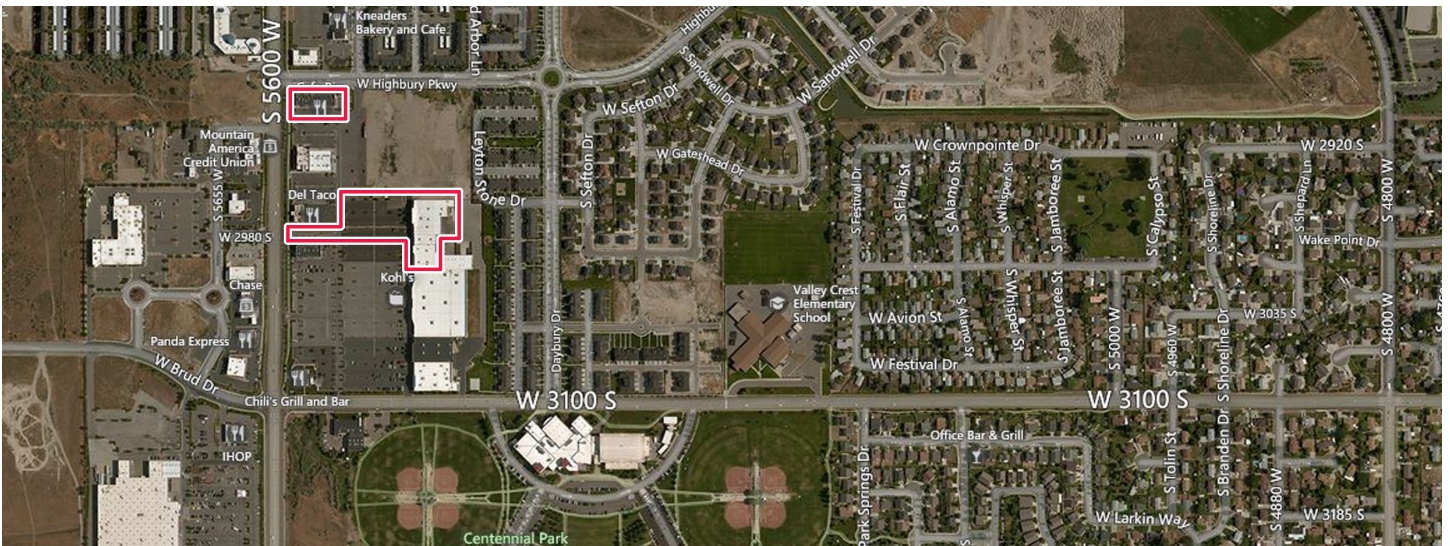
Leasing Contact: Sean Stuart | sean.stuart@inlandgroup.com | 630.586.6551 | inlandgroup.com

Property managed by Inland Commercial Real Estate Services LLC



Property Highlights

- Center Size: 52,997 SF
- Shadow-anchored by Kohl's and located in an adjacent suburb of Salt Lake City
- Great visibility on South 5600 West - 40,000 AADT
- Strong population in immediate area - 112,000+ within a 3 mile radius



inlandgroup.com

The Inland name and logo are registered trademarks being used under license.



Shoppes at Lake Park

2971 South 5600 West, West Valley UT 84120

Coordinates:
Latitude: 40.6965
Longitude: -112.0273

Leasing Contact: Sean Stuart | sean.stuart@inlandgroup.com | 630.586.6551 | inlandgroup.com

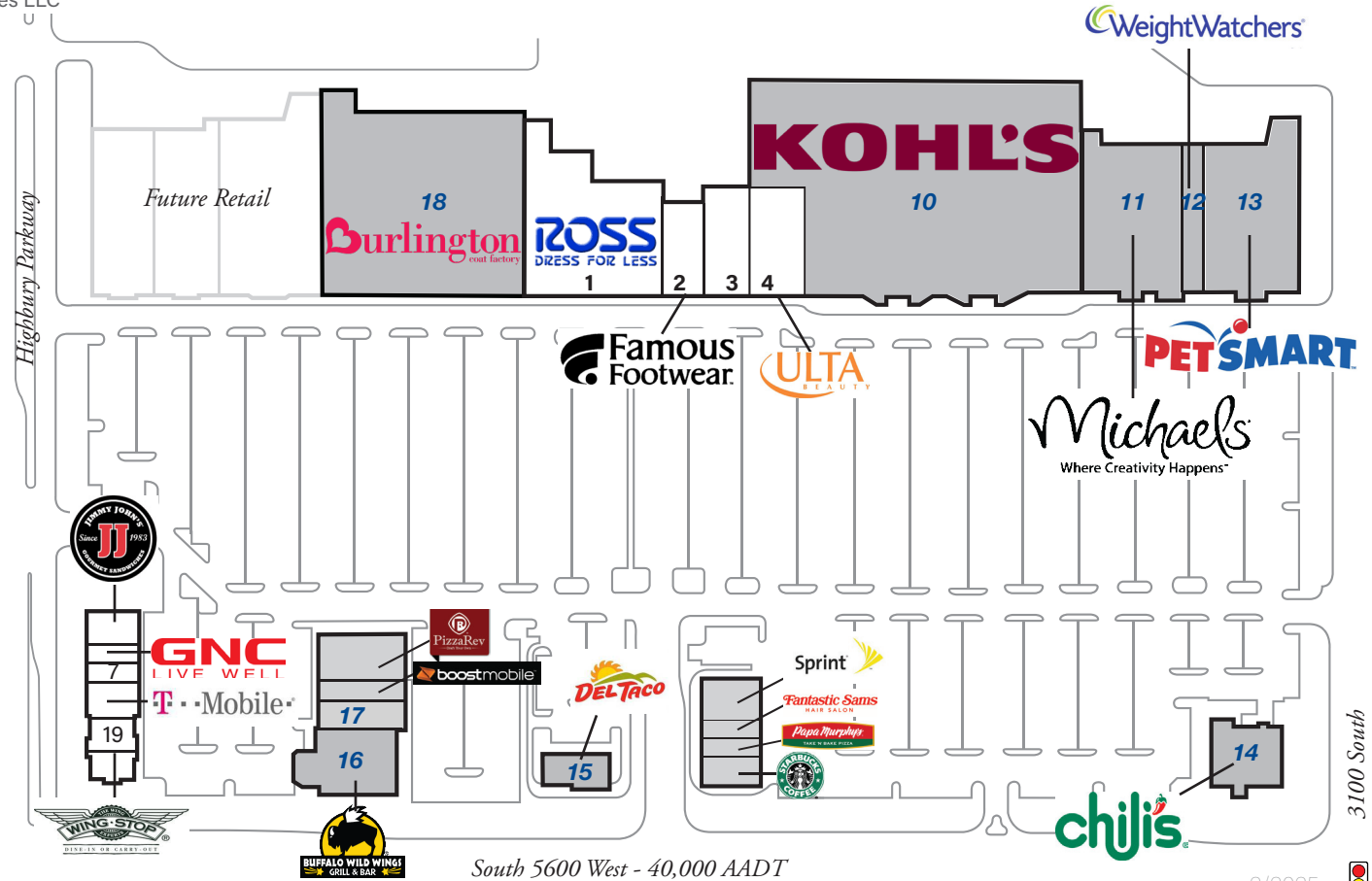
Property managed by Inland Commercial Real Estate Services LLC

Store Listing

Center Size: 52,997 Sq. Ft.

Unit #	Sq. Ft.	Tenant
1	25,000 SF	Ross Dress for Less
2	5,000 SF	Famous Footwear
3	5,000 SF	Affordable Dentures & Crowns
4	7,906 SF	Ulta
5	1,252 SF	Jimmy John's
6	1,276 SF	GNC
7	1,276 SF	Crispy Cones
8	2,591 SF	T-Mobile
9	1,550 SF	Wingstop
10		Kohl's
11		Michaels
12		Weight Watchers
13		PetSmart
14		Chili's Grill & Bar
15		Del Taco
16		Buffalo Wild Wings
17		Available
18		Burlington
19	2,052 SF	LoLo Hawaiian BBQ

Items in blue and *Italicized* are owned by others.



South 5600 West - 40,000 AADT

2024 Demographics Estimate



	Resident Population	Households	Average HH Income
1 Mile	12,462	3,542	\$107,106
3 Miles	96,328	27,607	\$112,832
5 Miles	218,075	65,525	\$104,284

2/2025